

The Ventilated Roof System

*Enhanced Energy Efficiency, Savings and Performance
All In One Concrete Tile Roof System*



USA Owned. USA Made.

Your Roof Matters. Protect Your Most Important Investment With The Best Underlayment In Its Class.

EAGLE **ARMOR** by

Your roof protects your home, your loved ones and your valuables. Everything that you hold dear. So, give it the consideration it deserves by ensuring that its foundation is protected with the best building products.

Eagle Armor by APOC is a premium, all-purpose fleece top underlayment and leak barrier that is installed on the surface of the roof deck. A quality and reliable roofing product, it is specially formulated to handle the most extreme of weather conditions, protecting residential buildings from hot, humid conditions, blistering sun, rain, wind and more.

The strongest and most durable underlayment in its class, Eagle Armor by APOC:

- is made in the USA,
- is UV Protected & High Temperature Resistant,
- has an Exposure Rating of 180 Days,
- reduces the possibility of Wind Driven Rain, Ice Dams, Leaks & Water Damage,
- is ASTM E108 and UL 790 Tested: Class A Assembly under Eagle Concrete Roof Tiles,
- comes with a 30 Year Warranty provided by APOC.

Easy to install, Eagle Armor by APOC is the perfect complement to the Ventilated Roof System.



*For The Ultimate Line Of Defense Against The Elements,
Install Eagle Armor By APOC.*

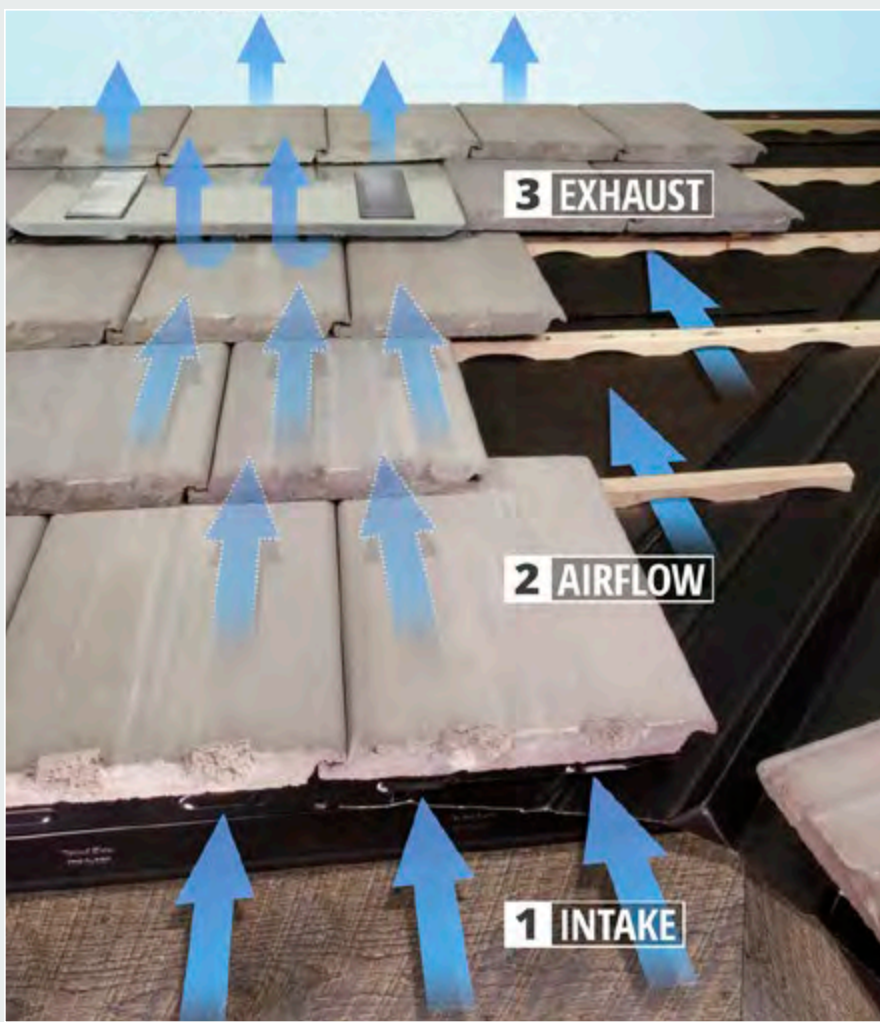
For more information or to receive a free sample, visit eagleroofing.com/eagle-armor

The Ventilated Roof System

Superior Performance, Enhanced Energy Efficiency

Your roof can be your home's biggest energy efficiency weak spot. Heat penetrates the roofscape and warms up attics and top floors, forcing air conditioners to work overtime to keep the building cool. Therefore, choosing the right roofing material for your residence, whether new construction or a re-roof, is an important decision that should be at the very top of your list.

When you choose a concrete tile roof not only are you getting a beautiful, durable and sustainable product but also one that possesses significant qualities to emit heat and reflect the sun's rays. However, did you know that you can increase the longevity of the roof itself, and further enhance the inherent energy efficiency properties of the roof tile by upgrading to Eagle's Ventilated Roof System?



The Ventilated Roof System is an all-in-one concrete tile roof system that focuses on energy efficiency, savings and performance. It is comprised of three key elements that revolve around facilitating airflow.

Ventilated Eave Closures allow for air intake, while our **Arched Battens** expedite airflow across the roof deck. Finally, **O'Hagin Attic Vents** are used for proper air exhaust.

Circulating airflow underneath your concrete tile roof keeps the space cooler thereby reducing heat transfer from the attic into the overall living area, conserving energy. In addition, it extends the long-term performance and lifespan of the underlayment and components.

The Ventilated Roof System is a smart, aesthetically pleasing installation method that improves your home's efficiency and comfort by decreasing heat retention, which in turn saves money on electricity bills while mitigating urban heat island effects.

For more information on the Ventilated Roof System, visit www.eagleroofing.com

Core Components of the Ventilated Roof System



1 Ventilated Eave Closure—*Intake*

Eave closures have a lot of useful benefits. They provide proper rise for the eave course, or first row of tile, and help prevent intrusion under the tile by birds or other wildlife.

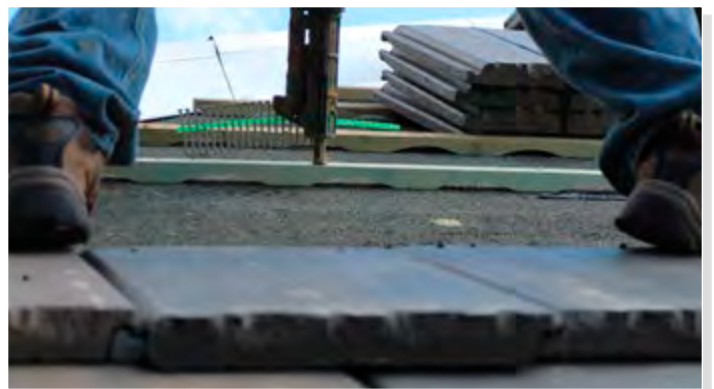
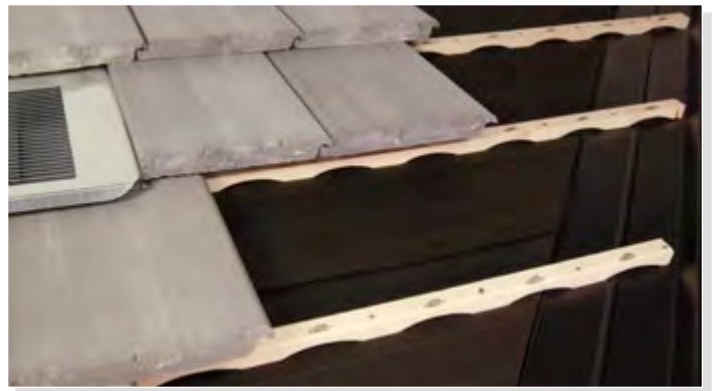
In addition, the small holes throughout the strip of metal *enables air to enter* from the eave and travel under the roof tiles. It also allows for proper water drainage.



2 Arched Battens—*Airflow*

As mentioned, air travels from the eave under the roof tiles. The velocity of the airflow under the roof tiles is further elevated by using Eagle's *Arched Battens*. Made from strong, graded-lumber in natural or treated wood, the battens serve a dual purpose of *promoting energy saving airflow*, while facilitating drainage.

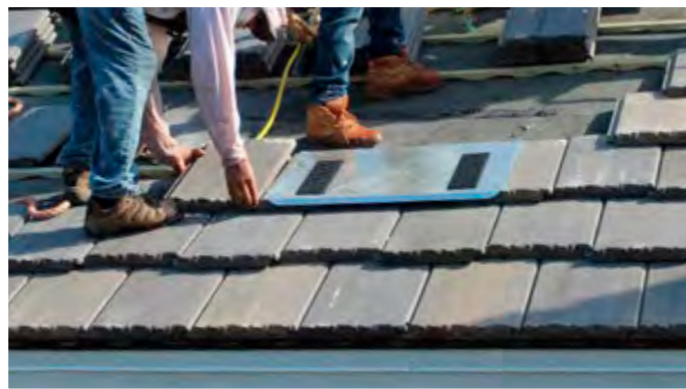
Allowing water to drain properly to the eave of the roof helps prevent damage to the underlayment and roof deck. Arched Battens are an essential component in wet and/or cold weather climates as it allows tile to dry faster, reducing the growth of moss, and helps prevent ice damming/icicles at the edge of the roof.



3 O'Hagin Attic Vents—*Exhaust*

While a concrete tile roof is fundamentally air permeable, proper and functional attic ventilation is key in removing heat, which can increase your energy bills.

Proper air exhaust can be accomplished by installing profile specific *O'Hagin Attic Vents* which provide maximum airflow without detracting from the aesthetics of the tile and overall roof design.



Eagle's Concrete Roof Tile—*The Product*

A *concrete tile roof* embodies beauty, elegance, resiliency and longevity. It also has a very important characteristic that is sometimes overlooked, and that is its *thermal mass*.

Thermal mass allows the roof tile to absorb and store heat. Providing an added layer of insulation, heat conduction into the building is reduced and slowly released throughout the day. This enables your house to stay cooler in the summer so you're A/C doesn't have to work as hard, and warmer in the winter as heat is retained and added throughout the night.

Energy savings is just one of the many benefits that makes an Eagle concrete tile roof the *superior choice* in roofing materials.

For more information on the Ventilated Roof System, visit www.eagleroofting.com

About Eagle Roofing Products

When you choose Eagle, you are choosing beauty, quality, durability and sustainability. More importantly, you are picking a company that takes the needs of their customers seriously and is always here to help. As America's #1 manufacturer of concrete roof tile, we strive to provide our customers with superior roofing products while building long-lasting relationships. That's what inspires us to be your company of choice. **That's what makes us different.**



Eagle Design Centers

Southern California

Irvine
17875 Sky Park Circle Suite F
Irvine, CA 92614
Phone: 949-553-8333

Rialto
2352 N. Locust Ave.
Gate 2
Rialto, CA 92377
Phone: 800-400-3245

Arizona

Phoenix
4608 W. Elwood
Phoenix, AZ 85043
Phone: 602-346-1749

Northern California

Granite Bay
7095 Douglas Blvd.
Suite K
Granite Bay, CA 95746
Phone: 916-789-4555

Florida

Orlando Area
402 Northlake Blvd.,
Suite 1028
Altamonte Springs, FL 32701
Phone: 407-691-7100

Manufacturing Plants Servicing:

Southern California/ Intermountain

Rialto
2352 N. Locust Ave.
Gate 1
Rialto, CA 92377
Phone: 1-800-300-3245

Southwest/ Great Plains

Phoenix
4602 W. Elwood
Phoenix, AZ 85043
Phone: 1-800-346-5260

Northern California/ Northwest

Stockton
4555 South McKinley Ave.
Stockton, CA 95206
Phone: 1-800-998-3245

Florida/East Coast

Central Florida
1575 E. CR 470
Sumterville, FL 33585
Phone: 1-877-300-3245



Corporate Offices

3546 N. Riverside Ave.
Rialto, CA 92377

Phone: 909-822-6000

eagleroofing.com

Eagle is proud to be affiliated with these organizations:



Connect with us!

